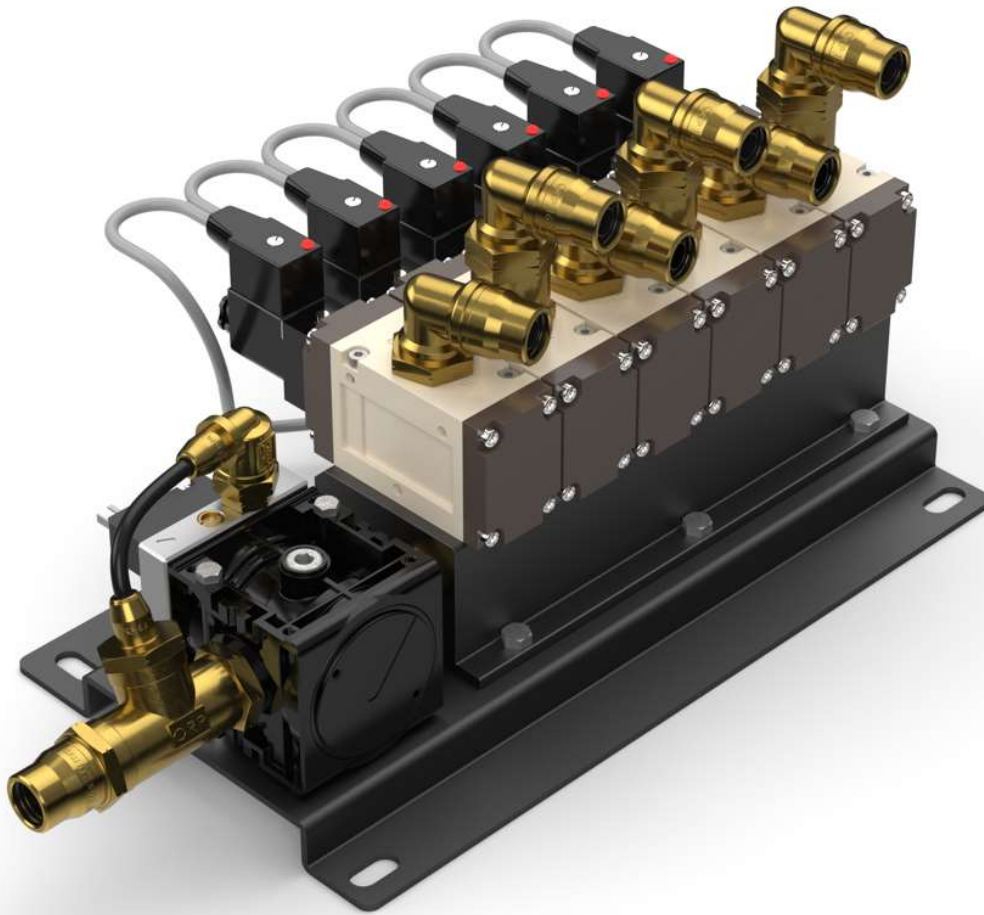


QTIS-DPVBA-x-y valve block with dual outlet pressure

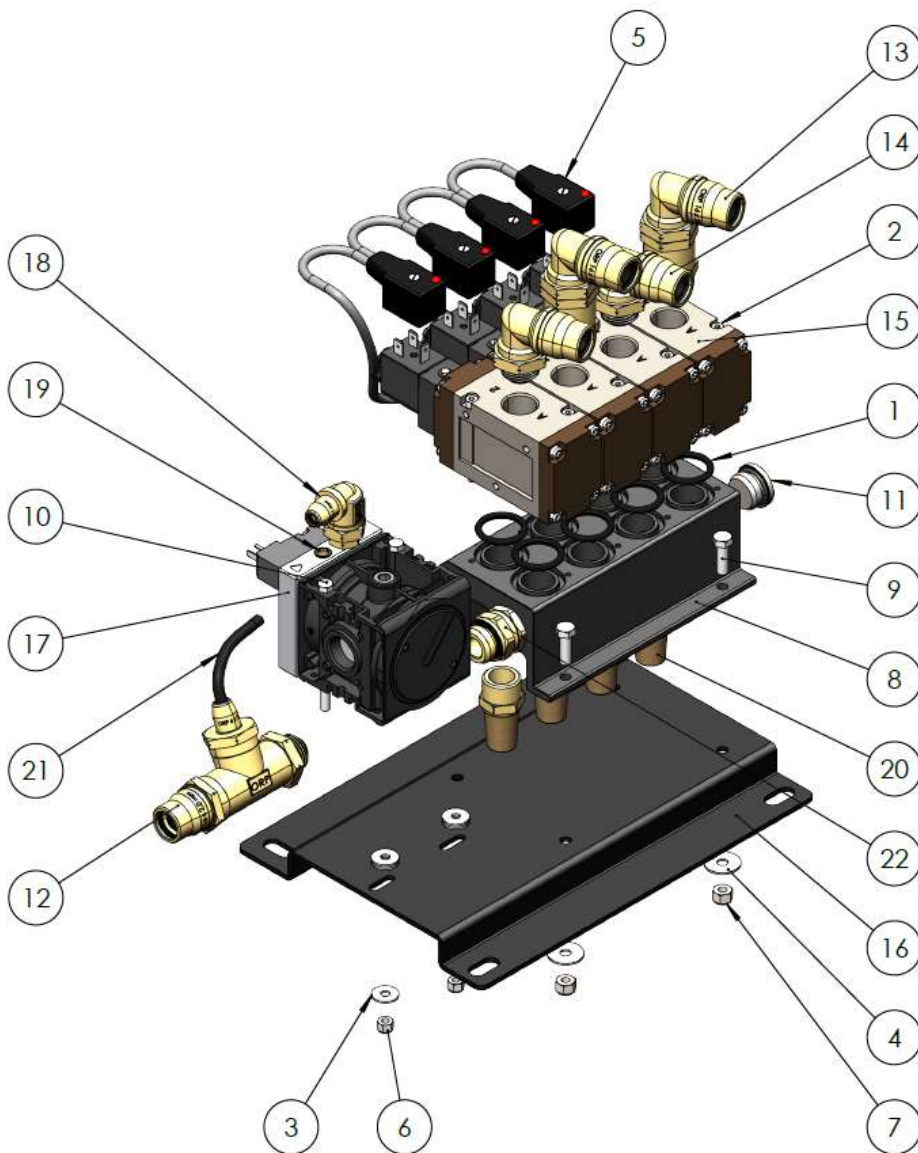


The QTIS-DPVBA-x-y valve island offers you easy control over the tire inflation and deflation process. It is available in a four-way and six-way version (x), and for voltages of 12 VDC or 24 VDC (y). (cables and connectors not included)

Component QTIS-DPV (17), the dual-pressure valve, offers you an adjustable pressure from 4 bar to 6.5 bar as a standard pressure for filling the tires. When the dual-pressure valve is electrically operated, it allows the available downstream system pressure of 7-10 bar to pass through, causing the wheel valve QTIS-WVA to deflate the tire. The flow capacity of the dual-pressure valve is 8000 NI/min. The 3/2 normally closed low temperature valves QTIS-TWV (15) are mounted on the base plate QTIS-APE (8). The operating temperatures are from -20°C to +85°C. When a valve is electrically operated, compressed air is connected to the QTIS-WVA rim valve and it performs the inflation or deflation function depending on the selected pressure.

The valve capacity is 1800 NI/min and should allow for quick inflation of the tires, depending on the system capacity of the compressor and the compressed air tanks. The whole is mounted on a QTIS-MP mounting plate and can optionally be equipped with cables or connectors.

Partnumber	Number valves / wheels	Tension
QTIS-DPVBA-4-12	4	12 VDC
QTIS-DPVBA-4-24	4	24 VDC
QTIS-DPVBA-6-12	6	12 VDC
QTIS-DPVBA-6-24	6	24 VDC



Compressed air pressures	4-10bar / 0,4-1,- kPa	ISO8573-1: 3-4-4
Ambient temperatures	-20°C / +85°C	
Voltage / Wattage	12 or 24 VDC	3W, 100% ED
Coil sizes	DIN43650-B 11mm 3/2 NC Valve	EN 175301-803
	DIN43650-C Double Pressure valve	
Coils	Class F / IP65	
Max. Cycli -- Reaction speeds	5/s -- 0,05s	

The pre-assembled fittings have a connection size for hose $\varnothing 16 \times 2 \text{mm}$. The brake fittings used ensure that you can no longer lose the hose after assembly. The electrical connectors for the QTIS-TWV valves are DIN 43650-B, and for the double pressure valve QTIS-DPV DIN 43650-C.

The base plate can be adapted to your vehicle requirements for quick assembly and to limit the number of required parts.

On request: STEP file
 Parts list
 Installation manual
 Contract prices

Copying of this document, and giving it to others and the use or communication of the contents thereof, are forbidden without express authority. All rights in or to any and all know-how contained herein are explicitly reserved by the copyright owner.

